

# **CT1X Quick Start Guide**

Version: 2.0

2017-3-7

## Content

1、 Installation and access.....	错误！未定义书签。
1.1 Connection.....	错误！未定义书签。
1.2 Connect the headset.....	错误！未定义书签。
1.3 Check IP address.....	错误！未定义书签。
1.4 Enter the Setting of telephone.....	错误！未定义书签。
2、 Quick Configuration.....	错误！未定义书签。
2.1 Network Configuration.....	错误！未定义书签。
2.2 Account Configuration.....	7
3、 Login indicator.....	10

# 1. Installation and access

## 1.1 Connection

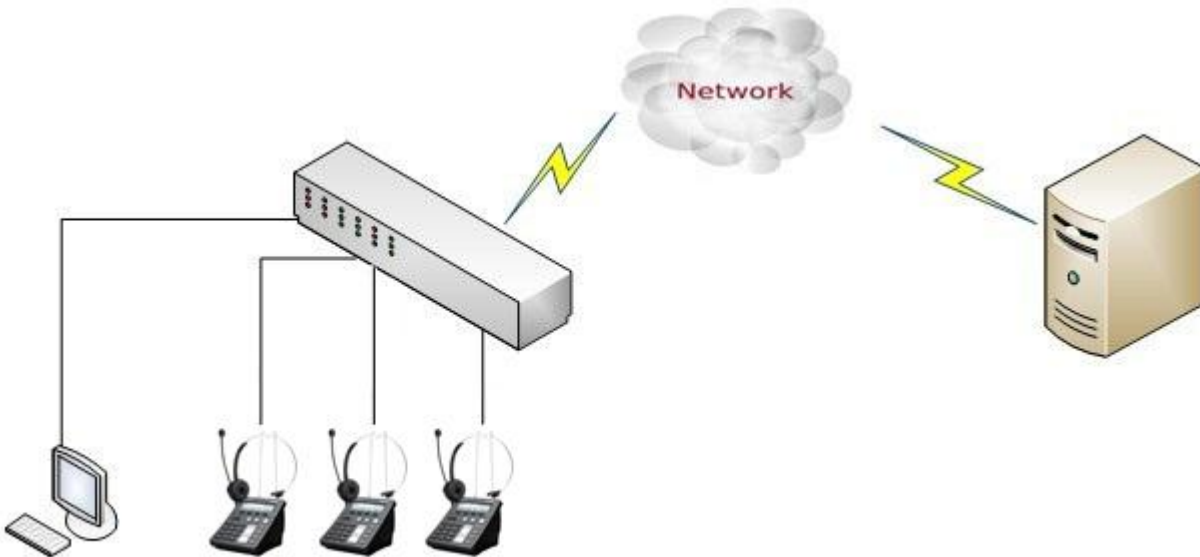
### 1) Power on

1. Plug in the power jack with DC 5V/1000mA
2. All led will be lighted once and then turn off
3. After absolute boot up, login led will be lighted in red and come into standby mode.

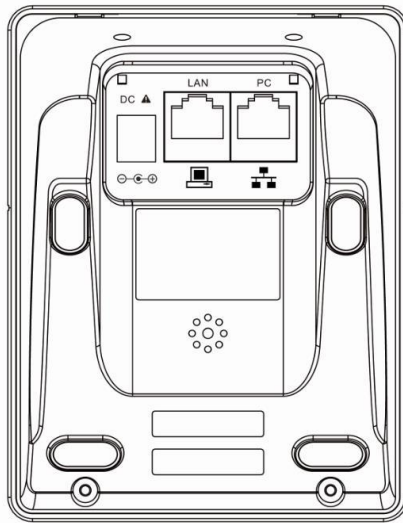
### 2) Connect to network

#### Connect network cable:

Look as below scene:

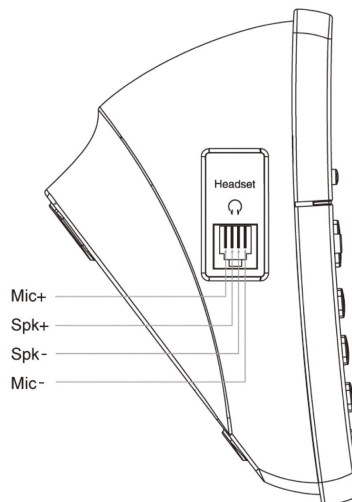


Plug in network cable at LAN port, the phone should obtain an IP address in default net settings, mostly like 172.16.0.54.



## 1.2 Connect the headset

Connect the RJ9 headset to the headset jack on the left side of the phone, The pin sequence of RJ9 port on the phone is like following picture:



## 1.3 Check IP

The phone uses DHCP mode by default,  
Please press **"Menu"**→**"Status"** to check the IP address when it is powered on and connected to the network.

## 1.4 Enter the Setting of telephone

Connect the PC and telephone in one network, input the IP address of telephone at a browser and press "Enter", you will be required to input the username and password to access the web page. The username/password as below:

Username	Password	Description
admin	admin	For Administrators
user	user	For General Users

## 2. Quick Configuration

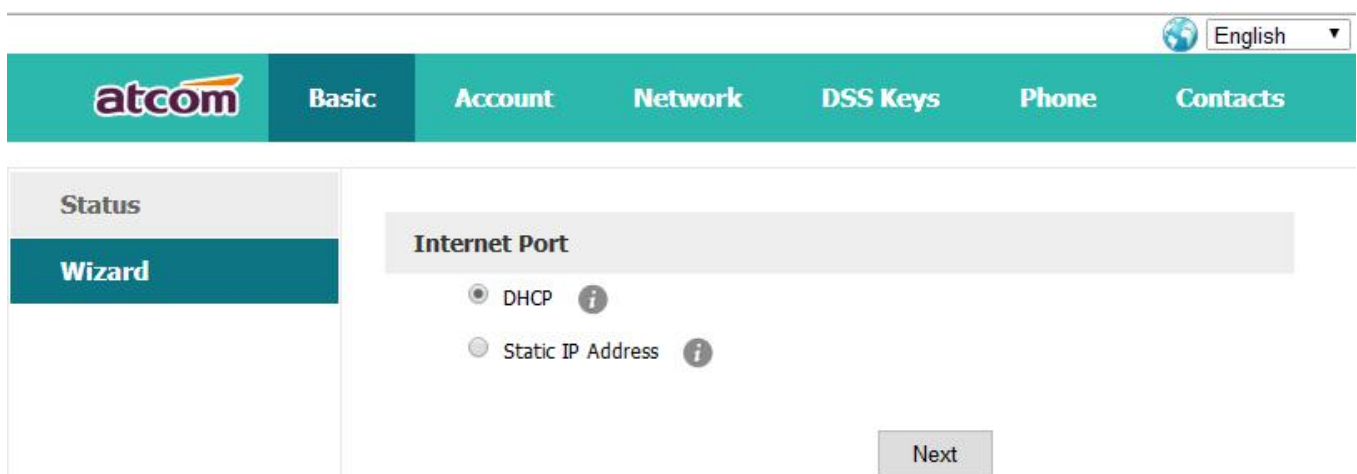
After login to the webpage, you're able to set the phone by quick configuration. Configure it quickly via Web: **"Basic"→"Wizard"**

User should set the below two parts in turn,

- 1.Network——LAN Port
- 2.Account——SIP

### 2.1 Enter the Setting of phone

There are 2 options for network access,

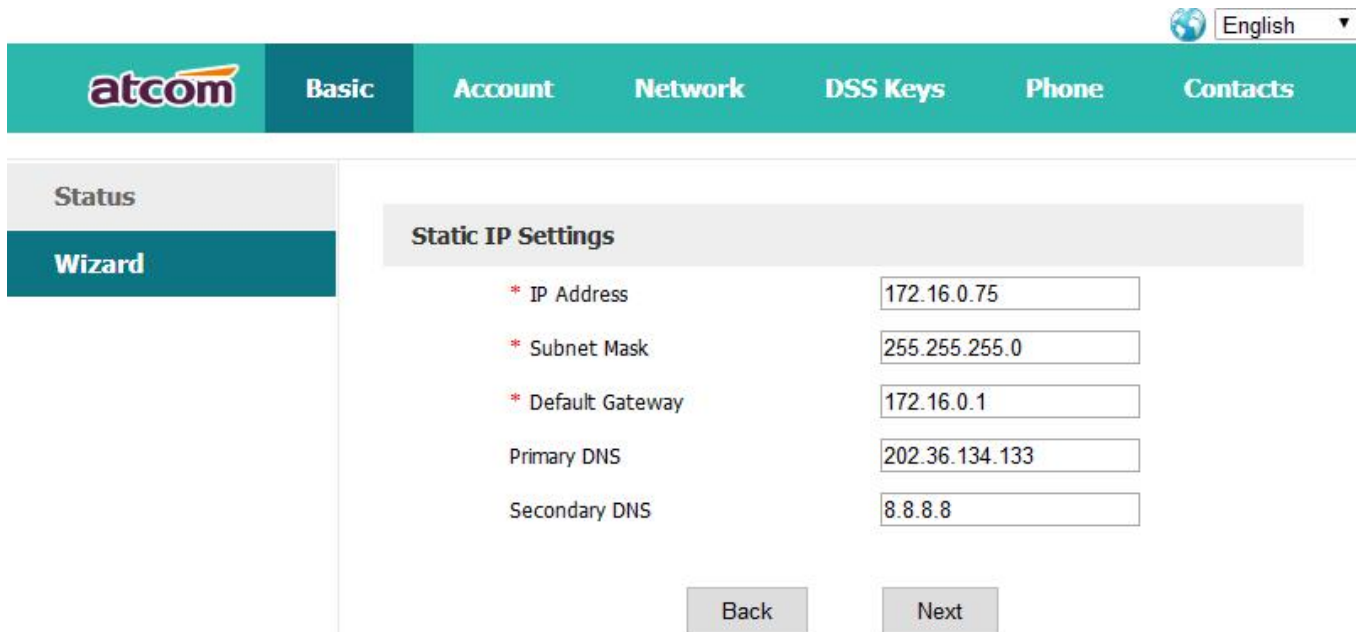


The screenshot shows the atcom web interface. At the top right, there is a language dropdown menu set to 'English'. Below this is a navigation bar with tabs: 'Basic' (selected), 'Account', 'Network', 'DSS Keys', 'Phone', and 'Contacts'. On the left side, there is a sidebar with 'Status' and 'Wizard' (selected). The main content area is titled 'Internet Port' and contains two radio button options: 'DHCP' (which is selected) and 'Static IP Address'. Each option has an information icon (i) next to it. At the bottom right of the main content area, there is a 'Next' button.

1.If chosen DHCP, the phone will be assigned a IP address automatically, click the button "Next"

to enter the web page of "Account Configuration".

2.If chosen Static IP, user should input the IP address manually for the phone, click the button "Next" to enter the web page of "Static IP Address".



The screenshot shows the atcom web interface. At the top right, there is a language selector set to "English". Below this is a navigation bar with tabs for "Basic", "Account", "Network", "DSS Keys", "Phone", and "Contacts". The "Basic" tab is active. On the left side, there is a sidebar with "Status" and "Wizard" options. The main content area is titled "Static IP Settings" and contains the following fields:

* IP Address	<input type="text" value="172.16.0.75"/>
* Subnet Mask	<input type="text" value="255.255.255.0"/>
* Default Gateway	<input type="text" value="172.16.0.1"/>
Primary DNS	<input type="text" value="202.36.134.133"/>
Secondary DNS	<input type="text" value="8.8.8.8"/>

At the bottom of the form, there are two buttons: "Back" and "Next".

After IP address filled manually, click the button "Next" to enter the web page of "Account Configuration", or click the button "Back" to back to web page of "Network Configuration".

Network Configuration can be completed in below webpage:

Via web "**Network**"→"**Basic**"

English ▼

atcom
Basic
Account
Network
DSS Keys
Phone
Contacts

Basic

Wi-Fi

Advanced

### Internet Port

DHCP i

Static IP Address i

\* IP Address

\* Subnet Mask

\* Default Gateway

Static DNS  Off  On i

Primary DNS

Secondary DNS

## 2.2 Account Configuration

The account configuration info will be saved to Line.

English ▼

atcom
Basic
Account
Network
DSS Keys
Phone
Contacts

Status

Wizard

### SIP Settings

Account Active  ▼

Label  i

Display Name  i

Register Name  i

\* User Name  i

Password  i

\* SIP Server  Port  i

Click the button "Finish" to save network configuration and account configuration, and click "Back" back to the previous web page.

Account Configuration can be completed in below webpage:

Via web "Account"→"Basic"

### 3. Login indicator

Login indicator	Status
Red/flashing	Network disconnected
Red/stable	SIP unregister
off	SIP register ok